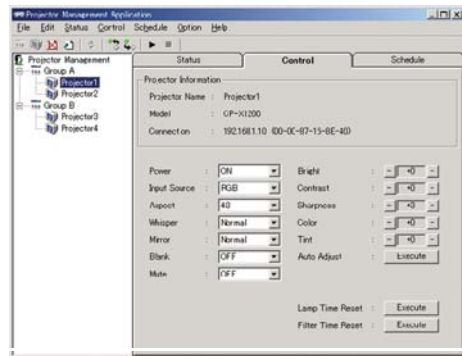


HITACHI PJ MAN™ PROJECTOR MANAGEMENT APPLICATION

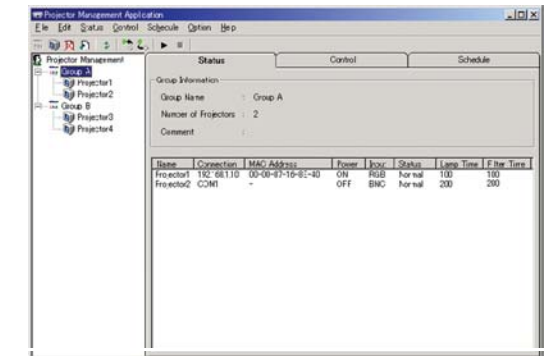
Hitachi's 'PJ Man' (Projector Management Application) allows you to manage, schedule, control, diagnose and schedule events for an individual or group* of Hitachi projectors.

PROJECTOR CONTROL



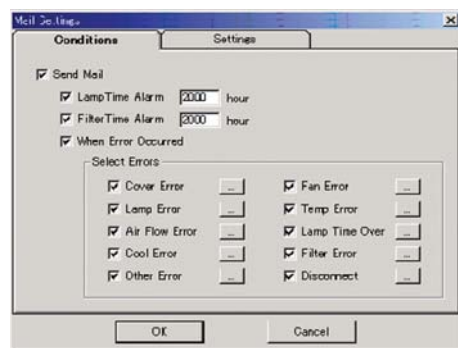
Control the functions of an individual or group of Hitachi projectors. PJ Man will allow you to remotely control simple functions (power on/off, input, aspect, etc...) as well as more advanced control settings.

PROJECTOR MONITORING & DIAGNOSTICS



Monitor & Diagnose the status of an individual or group of Hitachi projectors. PJ Man will show the status of your Hitachi Projector including power on/off, input source as well as lamp/filter hours and condition.

E-MAIL ALERTS!



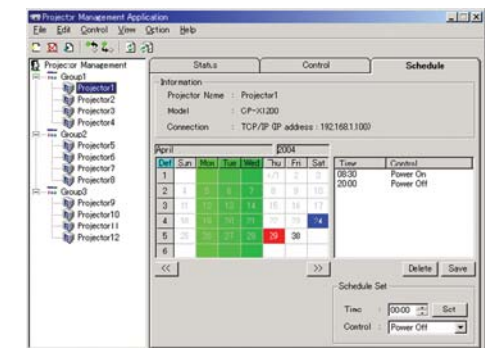
Receive an e-mail notification when it's time for scheduled maintenance or if the projector experiences an error condition. PJ Man e-mail settings include expiration of lamp usage time, filter cleaning reminder, cable disconnection, general errors, password protection and more.

* maximum 254 projectors

HITACHI PROJECTOR NETWORKING SOLUTIONS

Hitachi offers Network Management & Control Solutions for its LCD projector line with it's Hitachi's "PJ Man"™ (Projector Management Application). PJ Man allows you to Manage, Control, Monitor, and Schedule events for your Hitachi projectors over your LAN.

PROJECTOR SCHEDULING



Schedule events for an individual or group of Hitachi projectors. PJ Man events that can be scheduled include Power On/Off and Input Selection. Projector scheduling can be set for daily, weekly, or single time events.

PROJECTOR MONITORING & DIAGNOSTICS

Connect PJ Man to Hitachi Projectors that have an embedded RJ-45 Ethernet LAN Port.



Current Hitachi Projectors with embedded Ethernet ports include: CP-X443, CP-X445, CP-X1200, CP-X1250 and CP-SX1350.

Please check www.hitachi.us/digitalmedia for updated listing of projector models with embedded RJ-45 Ethernet LAN Ports.

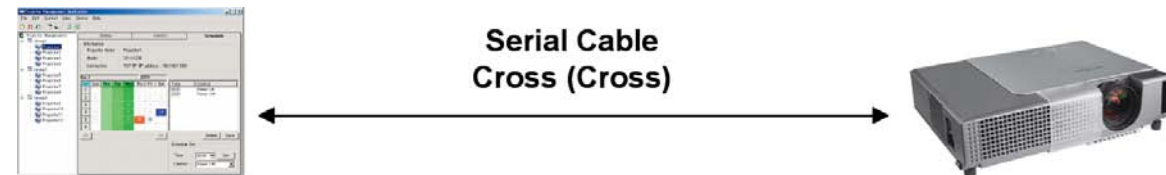
Connect PJ Man to Hitachi Projectors using an external Networking Module* (Ethernet to Serial).



Hitachi external Projector Networking Module part numbers

- HIT-UDS-10-01: 10Base-T module and cable adapter
- HIT-UDS-100-01: 10Base-T/100Base-TX module and cable adapter
- HIT-WB2100-01: Wireless module (802.11 to Serial)
- HIT-KJ-200: 802.11 b/g Wireless Projector Networking and Presentation Module

Connect PJ Man to Hitachi Projectors using an RS-232C Serial Cable (cross cable)



PJ Man Minimum System Requirements

- **Operating System**
Windows 2000 Professional SP3 or later version
Windows XP Professional SP1 or later version
- **CPU**
Pentium 500Mhz or higher
- **Memory**
256MB or higher
- **Hard disk**
Minimum 10MB free space for installation
- **Local Area Network connection (RJ-45) or Serial port (RS-232C)**